



Government of the People's Republic of Bangladesh  
Ministry of Water Resources  
**Bangladesh Delta Plan 2100, Formulation Project**

# General User Manual

April, 2026



Center for Environmental and Geographic Information Services

House: 6, Road: 23/C, Gulshan-1, Dhaka-1212, Bangladesh. Tel: 8817648-52, Fax: 880-2-8823128

# Table of Contents

1.1 Introduction.....	1
1.2 Components.....	1
1.2.1 Home.....	2
1.2.2 About Us .....	3
1.2.2.1 Bangladesh Delta Plan 2100 .....	3
1.2.2.2 SIBDP Projects .....	4
1.2.3 Documents .....	7
1.2.3.1 BDP 2100 Published Documents:.....	7
1.2.3.2 SIBDP Project Documents.....	7
1.2.4 BDP Tools and Data .....	8
1.2.4.1 Map Viewer: .....	8
1.2.4.2 Left Panel, Middle Panel and Right Panel .....	9
1.2.4.3 Map Layers .....	11
1.2.4.4 Metadata Viewer .....	12
1.2.4.5 Climate Atlas: .....	12
1.2.4.6 Meta Model.....	13
1.2.4.7 Urban Resilience .....	13
1.2.4.8 Blue Gold Wiki .....	14
1.2.4.9 Erosion Monitoring.....	14
1.2.5 News and Events.....	15
1.2.5.1 News .....	15
1.2.5.2 News Details .....	16
1.2.5.3 Events List .....	17
1.2.5.4 Event Details.....	17
1.2.6 Conference .....	18
1.2.7 Training.....	18
1.2.8 Gallery(Training & Seminar).....	19
1.2.9 Contact & Feedback.....	20
1.2.9.1 Contact .....	20
1.2.9.2 Feedback .....	20
1.2.10 Login.....	21
1.2.11 Manual .....	21

---

Figure 1.2.1 Home .....	2
Figure 1.2.2.1 Bangladesh Delta Plan 2100.....	3
Figure 1.2.2.2 SIBDP Overview .....	4
Figure 1.2.2.3 Delta Governing Council (DGC).....	4
Figure 1.2.2.4 Guiding and Advisory Committees.....	5
Figure 1.2.2.5 Project Management Unit (PMU).....	5
Figure 1.2.2.6 Implementing Ministries/Agencies.....	6
Figure 1.2.2.7 Technical Assistance Partners.....	6
Figure 1.2.2.8 Stakeholder Consultation Workshop .....	7
Figure 1.2.3.1 BDP 2100 Published Documents.....	7
Figure 1.2.3.2 SIBDP Project Documents.....	8
Figure 1.2.4.1 Map Viewer .....	9
Figure 1.2.4.2 Spatial Layers Tree.....	11
Figure 1.2.4.3 Legend .....	11
Figure 1.2.4.4 Metadata Viewer .....	12
Figure 1.2.4.5 Climate Atlas .....	12
Figure 1.2.4.6 Meta Model .....	13
Figure 1.2.4.7 Urban Resilience .....	13
Figure 1.2.4.8 Blue Gold Wiki.....	14
Figure 1.2.4.9 Erosion Monitoring .....	14
Figure 1.2.5.1 News Page .....	15
Figure 1.2.5.2 News Details.....	16
Figure 1.2.5.3 Event List.....	17
Figure 1.2.5.4 Event Details .....	17
Figure 1.2.6.1 International Conference 2022 / 2024 .....	18
Figure 1.2.7.1 Training List .....	19
Figure 1.2.8 1Gallery .....	19
Figure 1.2.10.1 Login.....	22
Figure 1.2.11.1 Manual.....	23

## 1.1 Introduction

The Bangladesh Delta Plan 2100 Formulation Project is led by the General Economics Division of the Bangladesh Planning Commission and was launched in August 2014, supported by the Government of the Netherlands. Delta Plan 2100 is a long-term, holistic, and integrated plan for the Bangladesh delta. Long-term goals for the next fifty to one-hundred years. Holistic is bringing together strategies for the country as a whole. Integrated is considering the needs of all water-related sectors in a single plan. The formulation of the Bangladesh Delta Plan 2100 draws on experience from the Delta Plan formulation process in the Netherlands. The Delta Plan formulates Strategies both on the national level and on the level of Hotspots. Strategies form coherent sets of measures to achieve the Delta Vision and are tested against developed Scenarios for robustness in a changing Bangladesh.

Bangladesh is the largest delta of the world. Its rivers and floodplains support life, livelihoods, and the economy. Over 160 million people live in an area of about 147 570 square kilometers. The country is defined by the delta, with almost a third of the country lying less than five meters above sea level.

The Bangladesh Delta Plan 2100 enables the Bangladesh government to integrate short-term, medium-term, and long-term planning and takes into account the effect of delta management on all sectors, empowering Bangladesh to make optimal, efficient use of limited resources. It enables the Bangladesh government to integrate climate change adaptation and plan for a future delta that ensures water safety, food security, and economic growth. By employing adaptive delta management, Bangladesh is able to conduct robust planning in the context of a rapidly changing environment.

A comprehensive database system and a knowledge portal is required to support the planners in the participatory and interactive planning process for ensuring adaptive management of the Bangladesh Delta. The overall objective of the knowledge portal is to develop a common and inclusive database on water, land, and related natural resources as well as collected and generated knowledge base information in support of the preparation, implementation, and dissemination of the Bangladesh Delta Plan.

## 1.2 Components

The knowledge portal consists of some major components. They are as follows:

1. Home
2. About Us
3. Documents
4. Tools and Data
5. News and Events
6. Conference
7. Training
8. Gallery
9. Contact & Feedback
10. Login
11. Manual

## 1.2.1 Home

This page contains an overview of the Knowledge Portal. The user can also navigate to other components from this page.

**BDP 2100**  
BANGLADESH DELTA PLAN 2100

**Knowledge Portal**  
Bangladesh Delta Plan 2100

Home About Us Documents Tools and Data News and Events Conference & Training Gallery Contact & Feedback Login Manual

**Landsat Image of 2021**

India India India Myanmar Bay of Bengal

**Honorable Minister**

**Amir Khasru Mahmud Chowdhury**  
Honorable Minister  
Ministry of Planning

**Honorable State Minister**

**Zonayed Abdur Rahim Saki**  
Honorable State Minister  
Ministry of Planning

**Background of BDP 2100**

"A 100 year visionary plan, Bangladesh Delta Plan 2100 – an important step towards fulfilling the commitment of achieving a safe, resilient and prosperous Bangladesh" proudly asserted by the Hon'ble Prime Minister.

Bangladesh is the first country in the world to develop such a comprehensive long-term plan for its entire delta. The Government of Bangladesh plans to spend 2.5% of GDP for delta-related interventions, through new investments and maintenance of already realized projects.

Figure 1.2.1 Home

## 1.2.2 About Us

This page contains an overview of the information of Knowledge Portal. The user can also navigate to information about the organizations. The About Us consists of two sub menu. They are as follows:

### 1.2.2.1 Bangladesh Delta Plan 2100

*This page contains an overview of the information of Bangladesh Delta Plan 2100.*

**Overview of BDP 2100**

Bangladesh faces substantial downside risks from the interface of its deltaic geographical configuration, high population density, and regular episodes of a range of natural disasters including flooding, river bank erosion, sea level rise, salinity intrusion, tidal surge, cyclones and water-logging. Moreover, dry season water shortage and wet season water surpluses; vulnerability from being a lower riparian to much of the river inflows are important characteristics. In addition, the growing water demand from rapid urbanization and industrialization, rapid depletion of groundwater owing to over-exploitation in many areas; arsenic poisoning of ground water, and a range of water quality issues emerging from industrialization and urbanization all combine to make the effective management of the Delta challenge a major driver of national development. In view of the special long-term challenges for development outcomes presented by climate change and natural hazards, the Government of Bangladesh has adopted a long-term integrated techno-economic plan 'Bangladesh Delta Plan 2100' (BDP2100) which was approved at the National Economic Council (NEC) meeting, presided over by the Hon'ble Prime Minister and Chairperson of the NEC, on 4 September 2018.

BDP 2100 seeks to integrate the short to medium term aspirations of Bangladesh to achieve upper middle income (UMIC) status and eliminate extreme poverty by FY2031 and developed country status by 2041 with the longer-term challenge of sustainable management of water, ecology, environment and land resources in the context of their interaction with natural disasters and climate change. The BDP2100 looks primarily at the medium-term delta agenda (2016-40) but is concerned that the decisions taken today have implications for the longer-term agenda for 2040 and beyond. In this regard, it sets up a long-term vision for the evolution of the Bangladesh Delta by the end of the 21st Century but defines short and medium-term goals as steps to reach that vision. These goals, associated strategies, policies, institutions and investments are moving targets and adaptive in nature. They are adaptive to changing natural events in order to respond appropriately and stay the course to the path of the long-term Delta vision. 4 September 2018.

**BDP 2100 Vision, Mission and Goals:**

A long-term delta vision and mission were adopted in BDP 2100 alongwith three higher-level national goals and six Delta specific goals focusing on water, ecology and land use that contribute to achieving these higher-level goals to realize the mission and translate the vision into reality.

**Vision:** Achieving safe, climate resilient and prosperous Delta

**Mission:** Ensure long term water and food security, economic growth and environmental sustainability while effectively reducing vulnerability to natural disasters and building resilience to climate change and other delta challenges issues through robust, adaptive and integrated strategies, and equitable water governance.

**Higher level National goals:**

- o Goal 1: Eliminate extreme poverty by 2030;
- o Goal 2: Achieve upper middle-income status by 2030, and
- o Goal 3: Being a prosperous country beyond 2041.

**BDP 2100 Delta specific goals:**

- o Goal 1: Ensure safety from floods and climate change related disasters;
- o Goal 2: Enhance water security and efficiency of water usages;
- o Goal 3: Ensure sustainable and integrated river systems and estuaries management;
- o Goal 4: Conserve and preserve wetlands and ecosystems and promote their wise use;
- o Goal 5: Develop effective institutions and equitable governance for in-country and transboundary water resources management; and

**BDP2100 Strategies**

Furthermore, BDP has provided nation-wide strategies on i) Flood Risk and ii) Freshwater Management. It has also provided strategies for a total of 9 thematic areas: i) Water Supply Sanitation and Waste Management; ii) Transboundary Water Management; iii) Dynamizing Inland Water Transport System; iv) Agriculture, Food Security, Nutrition and Livelihood; v) Sustainable Land Use and Spatial Planning; vi) Environment, Ecology and Bio-Diversity; vii) Advancing the Blue Economy; viii) Renewable Energy and ix) Earthquake.

BDP 2100 has also devised strategies for six hotspots (the planning unit of BDP 2100): i) Coastal Zone, ii) Barind and Drought Prone Areas, iii) Haor and Flash Flood Areas, iv) Chattogram Hill Tracts, v) River Systems and Estuaries and vi) Urban Areas.

The formulation of BDP2100 and its implementation is a complicated process, as a holistic approach is being applied to a complex delta with long-term time horizon and its execution. Adaptive Delta Management basically means managing uncertainty and risks, being prepared to some extent, able to adapt as and when required and when better solutions are available. In this respect, BDP2100 requires changing the usual planning and decision-making process impacting the delta and related governance and institutional environment.

Figure 1.2.2.1 Bangladesh Delta Plan 2100

### 1.2.2.2 SIBDP Projects

The SIBDP Projects consists of seven sub menus. They are as follows:

a) SIBDP Overview

This page contains an overview of the information of SIBDP Projects.

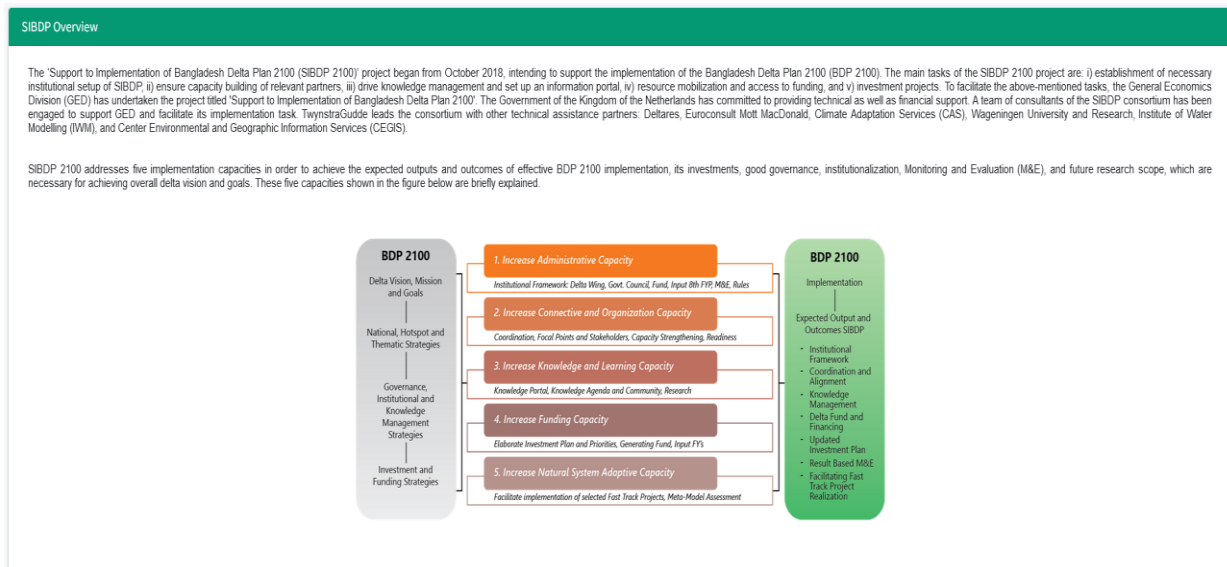


Figure 1.2.2.2 SIBDP Overview

b) Delta Governing Council (DGC)

This page contains an overview of the information of Delta Governing Council (DGC).

BDP 2100 Knowledge Portal Bangladesh Delta Plan 2100

Home About Us Documents Tools and Data News and Events Conference Training Gallery Contact & Feedback Login Manual

#### Delta Governing Council (DGC)

According to the provision of BDP 2100, Delta Governing Council (DGC), a high-level ministerial policy-making forum chaired by the Hon'ble Prime Minister has already been set up, and gazette notification has been issued. The Hon'ble Minister, Ministry of Planning, is the Vice Chairman of DGC. The respective Hon'ble Ministers, Ministry of Agriculture, Ministry of Finance; Ministry of Food; Ministry of Environment, Forest and Climate Change, and Ministry of Land are the members of DGC. In addition, the respective Hon'ble Ministers/State Ministers, Ministry of Fisheries and Livestock; Ministry of Shipping; Ministry of Water Resources; Ministry of Disaster Management and Relief are members of DGC. Also a Member from General Economics Division, Bangladesh Planning Commission is the Member Secretary of DGC.

- The Scope of Work of the Delta Governing Council is as follows:
  - Implement the 'Bangladesh Delta Plan 2100' through policy making, decision making, strategic advice and direction
  - Provide guidance in updating the 'Bangladesh Delta Plan 2100'
  - Implement the 'Bangladesh Delta Plan 2100' Investment Planning through policy making and strategic direction
  - Provide strategic direction to setup the Delta Fund as well as in using the fund
- The council will organize at least one meeting every year
- The council can co-opt a new member, if required
- The General Economics Division of Bangladesh Planning Commission will provide secretarial assistance to the council

Figure 1.2.2.3 Delta Governing Council (DGC)

c) Guiding and Advisory Committees

This page contains an overview of the information of Guiding and Advisory Committees.

Guiding and Advisory Committees		
<p><b>Project Steering Committee (PSC):</b> An inter-ministerial Project Steering Committee (PSC) has been established to review the overall progress of SIBDP 2100 project and provide policy guidelines to the project. It will also extend technical support to the DGC. According to the composition of PSC, the Senior Secretary/Secretary of Planning Division is the Chairperson.</p> <p>The composition of the Project Steering Committee is as follows:</p>		
I	Senior Secretary/Secretary, Planning Division	Chairperson
II	Chief, GED, Bangladesh Planning Commission	Member
III	Wing Chief (International Economics), GED, Bangladesh Planning Commission	Member
IV	Joint Chief (Irrigation), Agriculture, Water Resources and Rural Institution Division, Bangladesh Planning Commission	Member
V	Deputy Chief (International Economics), GED, Bangladesh Planning Commission	Member
VI	Deputy Chief (Planning), Planning Division	Member
VII	Representative, Europe Wing, ERD	Member
VIII	Representative, Planning Division	Member
IX	Representative, IMED, Ministry of Planning	Member
X	Representative, Ministry of Agriculture	Member
XI	Representative, Finance Division	Member
XII	Representative, Programming Division	Member
XIII	Representative, Ministry of Water Resources	Member
XIV	Representative, Ministry of Land	Member
XV	Representative, Ministry of Environment, Forest and Climate Change	Member

Figure 1.2.2.4 Guiding and Advisory Committees

d) Project Management Unit (PMU)

This page contains an overview of the information of Project Management Unit (PMU) .

Figure 1.2.2.5 Project Management Unit (PMU)

e) Implementing Ministries/Agencies  
 This page contains an overview of the information of Implementing Ministries/Agencies .

SL	Delta Ministries	Agencies
1	Ministry of Chittagong Hill Tracts Affairs	Reginal Council
		CHT Development Board
		Refugee Rehabilitation Task Force
		Rangamati Hill District Council
		Bandarban Hill District Council
		Khagrachari Hill District Council
2	Ministry of Primary and Mass Education	Directorate of Primary Education
		Bureau of Non-Formal Education
		National Academy for Primary Education
		Compulsory Primary Education Implementation Monitoring Unit
		Shishu Kollan Trust
3	Ministry of Agriculture	Department of Agricultural Extension (DAE)

Figure 1.2.2.6 Implementing Ministries/Agencies

f) Technical Assistance Partners  
 This page contains an overview of the information of Technical Assistance Partners.

Technical Assistance Partners

The technical assistance partners are:

- TynstraGudde (TG)
- Deltares
- Euroconsult Mott MacDonald
- Climate Adaptation Services (CAS)
- Wageningen University and Research
- Institute of Water Modelling (IWM)
- Center for Environmental and Geographic Information Services (CEGIS)

Figure 1.2.2.7 Technical Assistance Partners

---

### g) Stakeholder Consultation Workshop

This page contains an overview of the information of the Stakeholder Consultation Workshop.

## Figure 1.2.2.8 Stakeholder Consultation Workshop

### 1.2.3 Documents

This page contains all the reports and documents about the Delta Plan 2100. The user can also navigate and download from this menu. The BDP Documents consists of four sub menu. They are as follows:

#### 1.2.3.1 BDP 2100 Published Documents:

This page contains report of BDP 2100 Published Documents.

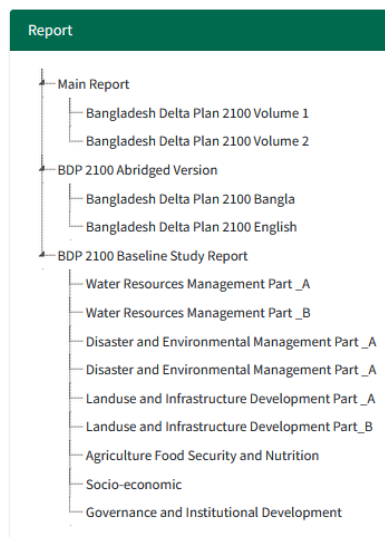


Figure 1.2.3.1 BDP 2100 Published Documents

#### 1.2.3.2 SIBDP Project Documents

This page contains report of SIBDP Project Documents.

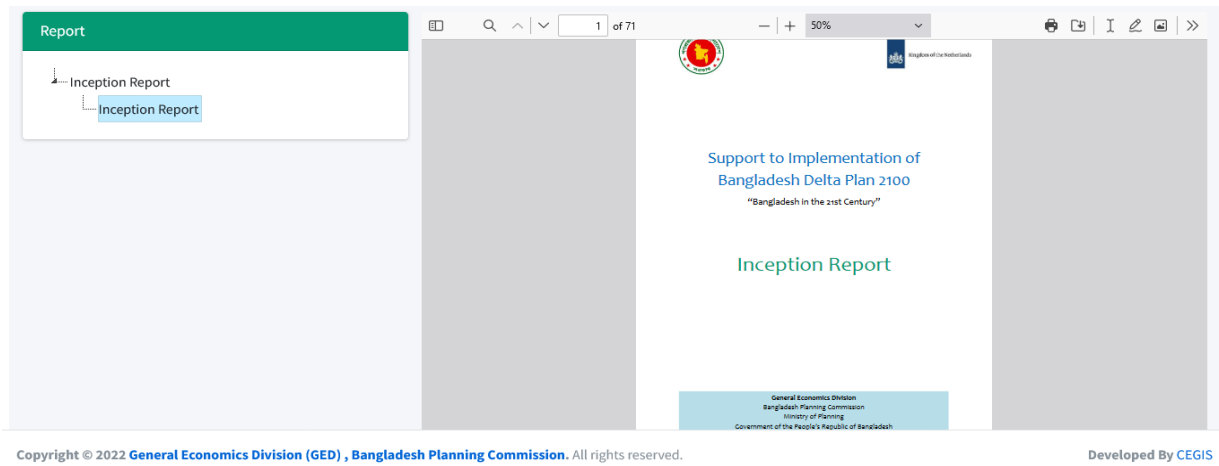


Figure 1.2.3.2 SIBDP Project Documents

This is the main component of the portal. This tool has been designed to display spatial and attributes data. Zoom in, zoom out, pan, super imposed and other standard facilities of spatial data viewer has been incorporated into the tool. The Map Explorer also provides facilities to view identity and attribute information of the spatial data layers. The Map Explorer interface contains three separate panels: Left Panel, Middle Panel and Right Panel.

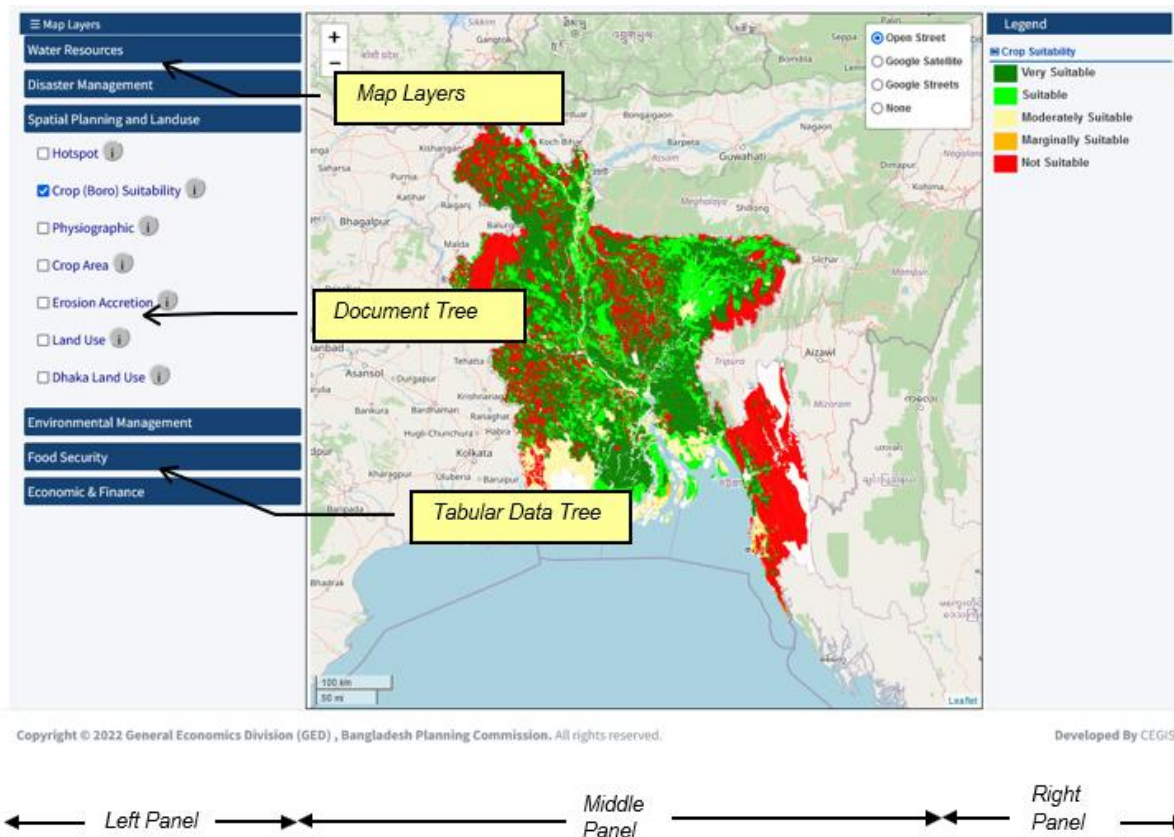


Figure 1.2.4.1 Map Viewer

### 1.2.4.2 Left Panel, Middle Panel and Right Panel

This panel contains tree of Map Layers and Legend

Table 1.1: Map Data

Data Group	Data layer	
<i>Basic Data</i>	<i>Coastal Area</i>	<i>Regional Road</i>
	<i>District Head Quarter</i>	<i>Zilla Road</i>
	<i>District</i>	<i>Upazilla Boundary</i>
	<i>Division</i>	<i>BIWTA Route</i>
	<i>International Boundary</i>	<i>Coastal Line</i>
<i>Water Resources</i>	<i>GBM Basin</i>	<i>Coastline 1973-2010</i>
	<i>Embankment</i>	<i>Channel Jamuna</i>
	<i>Hydrological Region</i>	<i>Drainage Map</i>
	<i>Polder Boundary</i>	<i>Waterbodies 2010</i>
	<i>Soil Salinity 2009</i>	<i>Bankline 2014</i>
	<i>Arsenic</i>	<i>Flood Regime Land Type</i>
	<i>BWDB Project</i>	<i>Rennels River System</i>
	<i>Catchment</i>	<i>River Flood Return Period</i>
	<i>Transboundary Catchment</i>	<i>Ground Water Zone</i>
	<i>Char Land</i>	<i>Coastline 2010</i>
	<i>Haor Boundary Type</i>	<i>LGED Project</i>
	<i>Haor Boundary</i>	<i>GBM Basin</i>
	<i>Irrigation Demand</i>	
<i>Disaster Management</i>	<i>Seismic Zone</i>	<i>Hazard Indics Map</i>
	<i>Cyclone Risk Area</i>	<i>SRDI Drought</i>
	<i>Flood Prone Area</i>	<i>Drought Map Kharif 1</i>
	<i>Hazard Area</i>	<i>Drought Map Kharif 2</i>
	<i>Flood Zone</i>	<i>Rabi Drought</i>
<i>Spatial Planning and Landuse</i>	<i>Erosion Accretion</i>	<i>Dhaka Landuse 2010</i>
	<i>Hotspot</i>	<i>General Landuse</i>
	<i>Physiographic</i>	<i>Crop Suitability</i>
	<i>Crop Area</i>	
<i>Environmental Management</i>	<i>Forest Type</i>	<i>Bio-ecological Zone</i>
	<i>Sundarban Forest Landuse</i>	<i>Eco - system</i>
<i>Food Security</i>	<i>Food Demand</i>	
<i>Economic Finance</i>	<i>Poverty 2010</i>	<i>Electricity</i>
	<i>Income</i>	

### 1.2.4.3 Map Layers

The data available in the database are categorized into different data groups for better management. Each data group contains several data layers. The Spatial Layers Tree contains different data groups as parent nodes and corresponding data layers as child nodes. Table 1.1 shows data groups and corresponding data layers used in the system.



Figure 1.2.4.2 Spatial Layers Tree

In order to view spatial data, select Data Layers from the Spatial Layers Tree as follows:

- Expand a Data Group such as Water Resources node from the Spatial Layers Tree.
- Select a Data layer such as “Crop Suitability” by clicking the corresponding checkbox.
- Data (Crop Suitability) will be displayed map in the Middle Panel.

#### Legend

Legend is information about map which describes the information about the attribute of the data.

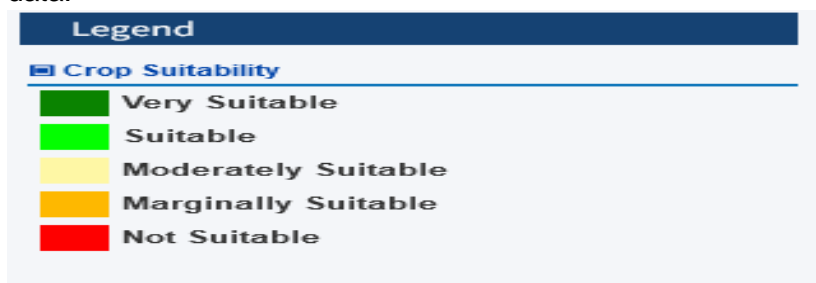


Figure 1.2.4.3 Legend

### 1.2.4.4 Metadata Viewer

Metadata is information about data which describes the content, quality, condition, and other appropriate characteristics of data. Metadata Viewer helps to display metadata of each data layer. This shows the metadata of the layer

<b>OverView :</b>	
Title	Sundarban Forest Landuse
Abstract	The Sundarbans Reserved Forest (SRF) is the largest single forest resource in the country, covering approximately 6 000 sqkm of mangroves .This data layer contains different types of vegetation, species, block number of Sundarbans Reserved Forest.
<b>General :</b>	
Title	Sundarban Forest Landuse
Purpose of Production	It will help too promote and implement a system of biodiversity conservation and sustainable management of forest.
Completeness	The data layer covers sundarban forest area of Bangladesh identified by DoFo.
Quality	Quality of this data layer depends on the data collection process of the source organization.
History of the Dataset	Source of the dataset was produced by Department of Forest. Data was derived from 1:50,000 SPOT satellite imagery, 1989. Amended by using 1:15000 air photography flown by QASco Ltd., 1995 under the Forest Resources Management Project of Bangladesh Forest
Process Description	Data has been collected from Department of Forest into digital format and stored this data layer as it was collected from the Forestry Department.
Type of Dataset	Shapefile
Dataset Language	English
Additional Information Source for the Dataset	

Figure 1.2.4.4 Metadata Viewer

In order to view Metadata, click on Metadata icon menu, then select metadata from the new window as Metadata (Sundarban Forest Landuse) will be displayed in the new window.

### 1.2.4.5 Climate Atlas:

In Climate Atlas shows in this menu and available in the portal. The Climate Atlas (Figure 1.2.4.5) contains writeup and interface in this menu.

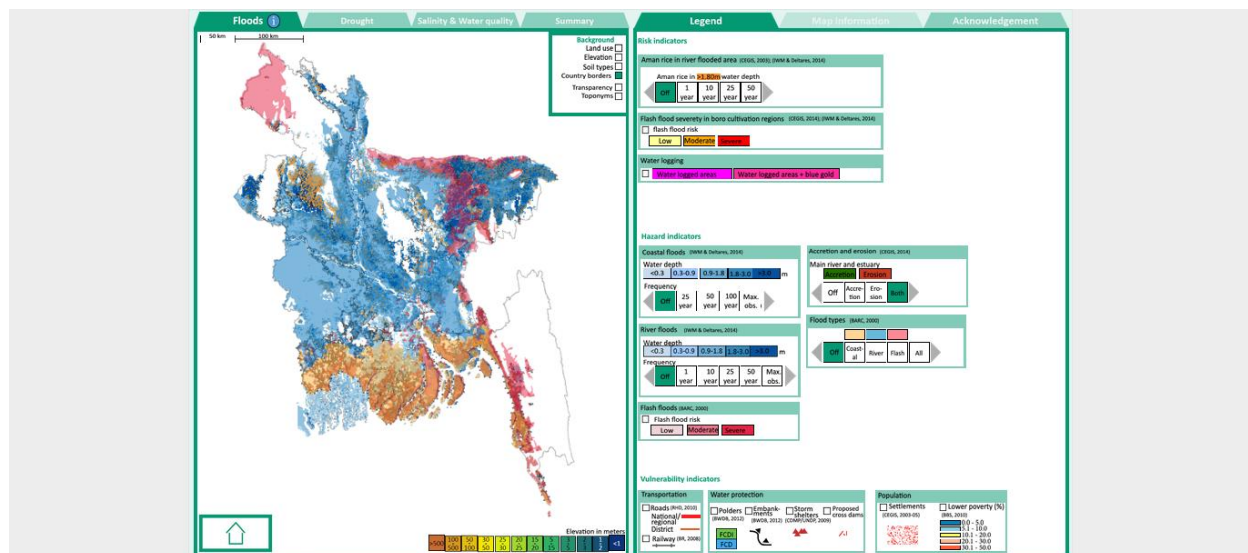


Figure 1.2.4.5 Climate Atlas

### 1.2.4.6 Meta Model

In Meta Model shows in this menu and available in the portal. The Meta Model (Figure 1.2.4.6) contains writeup and interface in this menu.

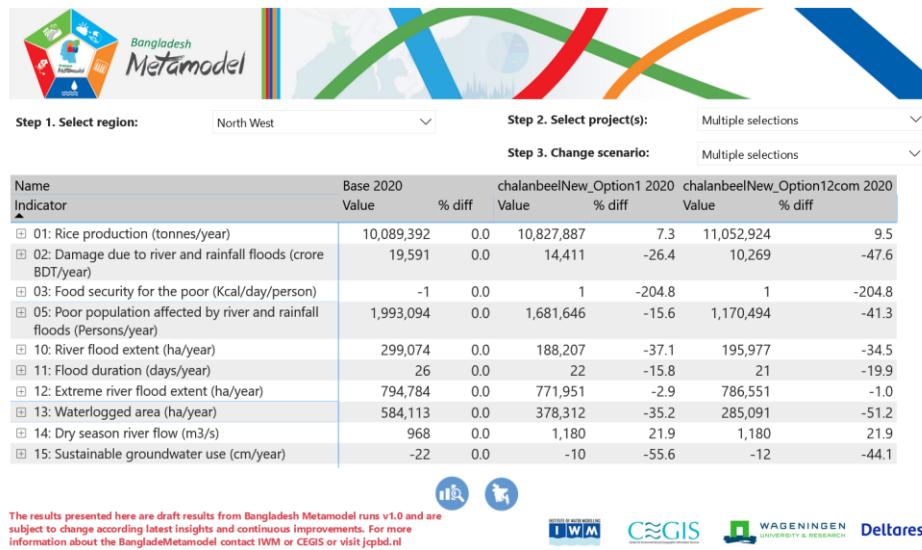


Figure 1.2.4.6 Meta Model

### 1.2.4.7 Urban Resilience

In Urban Resilience shows in this menu and available in the portal. The Urban Resilience (Figure 1.2.4.7) contains writeup and interface in this menu.

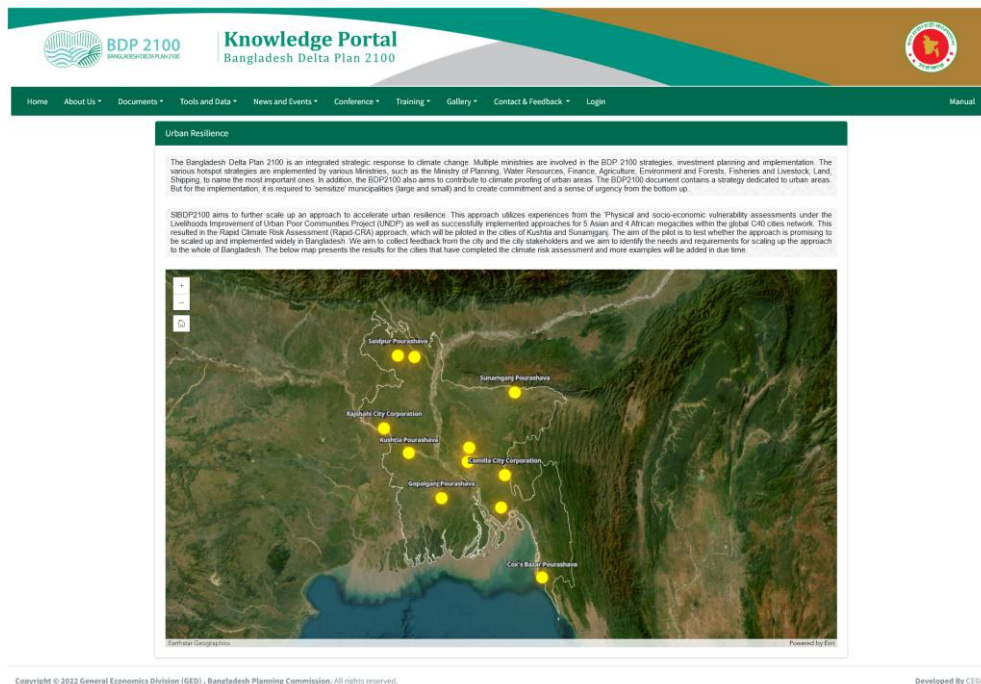


Figure 1.2.4.7 Urban Resilience

### 1.2.4.8 Blue Gold Wiki

In Blue Gold Wiki shows in this menu and available in the portal. The Blue Gold Wiki (Figure 1.2.4.8) contains writeup and interface in this menu.

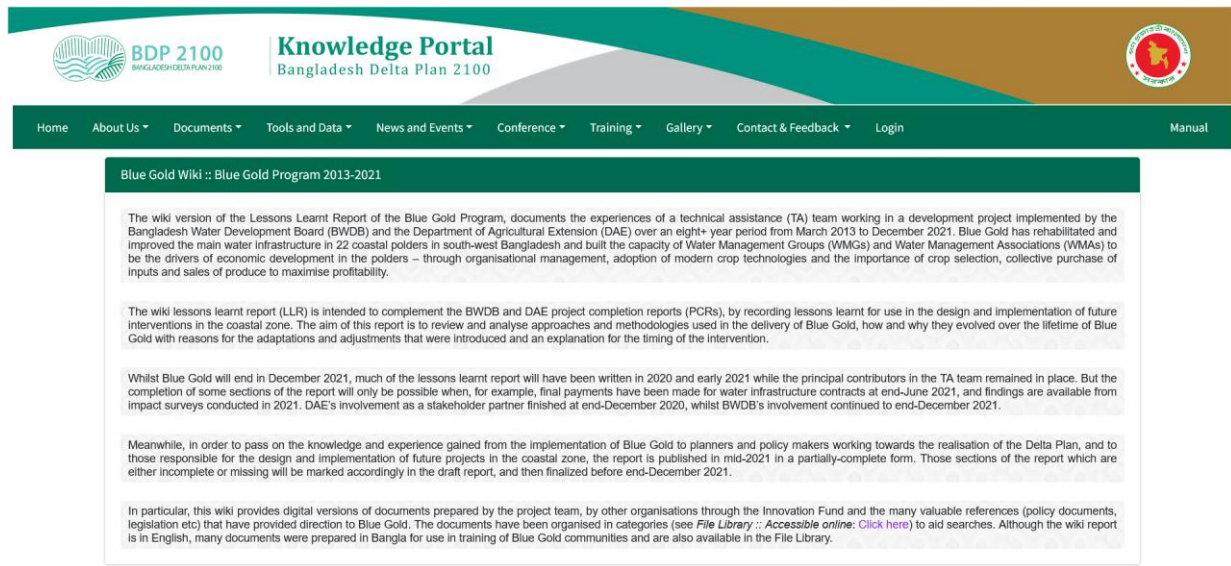


Figure 1.2.4.8 Blue Gold Wiki

### 1.2.4.9 Erosion Monitoring

In Erosion Monitoring shows in this menu and available in the portal. The Erosion Monitoring (Figure 1.2.4.9) contains map analysis interface in a new window.

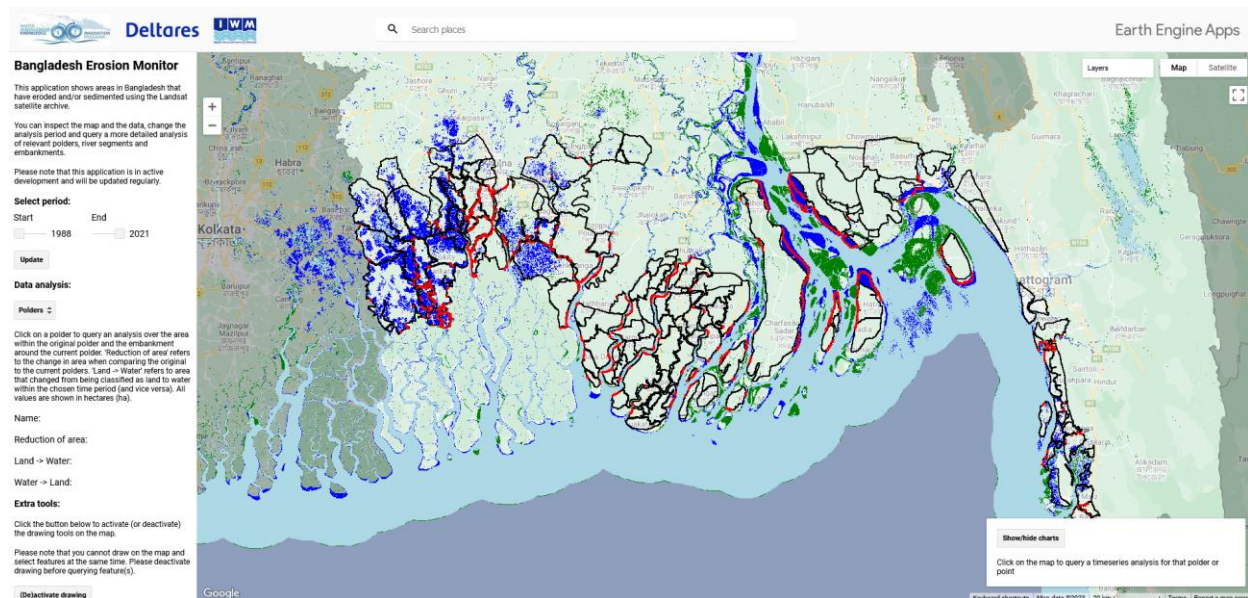


Figure 1.2.4.9 Erosion Monitoring

## 1.2.5 News and Events

News details show in this menu and available in the portal. The News details contains writeup and pictures in this menu.

### 1.2.5.1 News

The screenshot shows the 'News' section of the Knowledge Portal. The header includes the BDP 2100 logo and the text 'Knowledge Portal Bangladesh Delta Plan 2100'. A navigation menu is located below the header, with 'News and Events' highlighted. The main content area displays two news items:

- Visit from ADB Country Representative**  
**March 15, 2026**  
 An ADB team led by its country director Mr. Hoe Yun Jeong visited GED to explain and inform their studies...  
[...more](#)
- Preliminary Consultation Meeting on the Economic Strategy Paper**  
**February 05, 2026**  
 After the completion of the Eighth Five Year Plan (2020-2025) in June 2025, the country is currently facing a planning...  
[...more](#)

The footer contains the following text: Copyright © 2022 General Economics Division (GED), Bangladesh Planning Commission. All rights reserved. Developed By CEGIS.

Figure 1.2.5.1 News Page

---

### 1.2.5.2 News Details

---

## Preliminary Consultation Meeting on the Economic Strategy Paper

Date: February 05, 2026

After the completion of the Eighth Five Year Plan (2020–2025) in June 2025, the country is currently facing a planning vacuum due to the absence of a long-term economic plan. To address this gap during the interim period before the adoption of a future long term plan, the General Economics Division (GED) of Bangladesh Planning Commission has taken an initiative to prepare an economic strategy paper.

A preliminary consultation meeting was held on 5 February 2026 at the GED conference room under the chairmanship of Member of GED, Dr. Monzur Hossain. Renowned economists of the country, along with academics, social scientists, and population scientist, participated in the meeting. Dr. K. A. S. Murshid presented a concept paper at the meeting.

All participants welcomed the initiative to prepare such an economic strategy paper and expressed optimism that it would lay a strong foundation for formulating a future long-term development strategy. The discussants emphasized the importance of policy continuity, inclusive growth, and structural reforms.

In the concluding remarks, Member (GED) briefed the participants on the process of preparing the Strategy Paper and expressed the hope that it would support the achievement of sustainable economic development by incorporating the economic vision and mandate of the next political government. He also noted that the Strategy Paper would play a crucial role in maintaining continuity in the government's economic strategy. The meeting concluded with a vote of thanks and expressions of gratitude to all participants.

Participants attending both online and in person included: Dr. Zaidi Sattar, Dr. Sajjad Zohir, Dr. Mustafizur Rahman, Dr. Rushidan Islam Rahman, Dr. A. K. Enamul Haque, Dr. A. T. M. Nurul Amin, Dr. Fahmida Khatun, Dr. Selim Raihan, Dr. Sayema Haque Bidisha, Rasheda K. Chowdhury, Jyoti Rahman, Dr. Mobashar Hasan, Dr. Mainul Islam, Dr. Khurshed Alam, Dr. Munira Begum, Nikhil Kumar Das, Md. Ashrafuzzaman and senior officials of GED.

---

Figure 1.2.5.2 News Details

### **1.2.5.3 Events List**

Figure 1.2.5.3 Event List

### **1.2.5.4 Event Details**

Figure 1.2.5.4 Event Details

## **1.2.6 Conference**

Conference details shows in this menu and available in the portal. The Conference details (Figure 1.2.6) contains writeup and pictures in this menu.

Figure 1.2.6.1 International Conference 2022 / 2024

## **1.2.7 Training**

Training tab shows in this menu and available in the portal. The Training (Figure 1.2.7) contains list of training and pictures in this menu.

**BDP 2100**  
BANGLADESH DELTA PLAN 2100

**Knowledge Portal**  
Bangladesh Delta Plan 2100

Home About Us Documents Tools and Data News and Events Conference Training Gallery Contact & Feedback Login Manual

Filter by Training Type:  
All

Show 10 entries Search:

Serial No	Training Type Name	Number of Days	Dates	Venue	Number of Participants
1	Meta Model Training	2	2025-01-03 - 2025-01-04	dhaka	23
2	ADM Cum Meta Model Training	2	2025-01-02 - 2025-01-03	34dsfh	4

Showing 1 to 2 of 2 entries Previous 1 Next

Figure 1.2.7 Training List

### 1.2.8 Gallery(Training & Seminar)

Figure 1.2.8 1Gallery

## **1.2.9 Contact & Feedback**

Contact details shows in this menu and available in the portal. The Contact details (Figure 1.2.9.1) shows in this menu.

### **1.2.9.1 Contact**

Figure 1.2.9.1 Contact

### **1.2.9.2 Feedback**

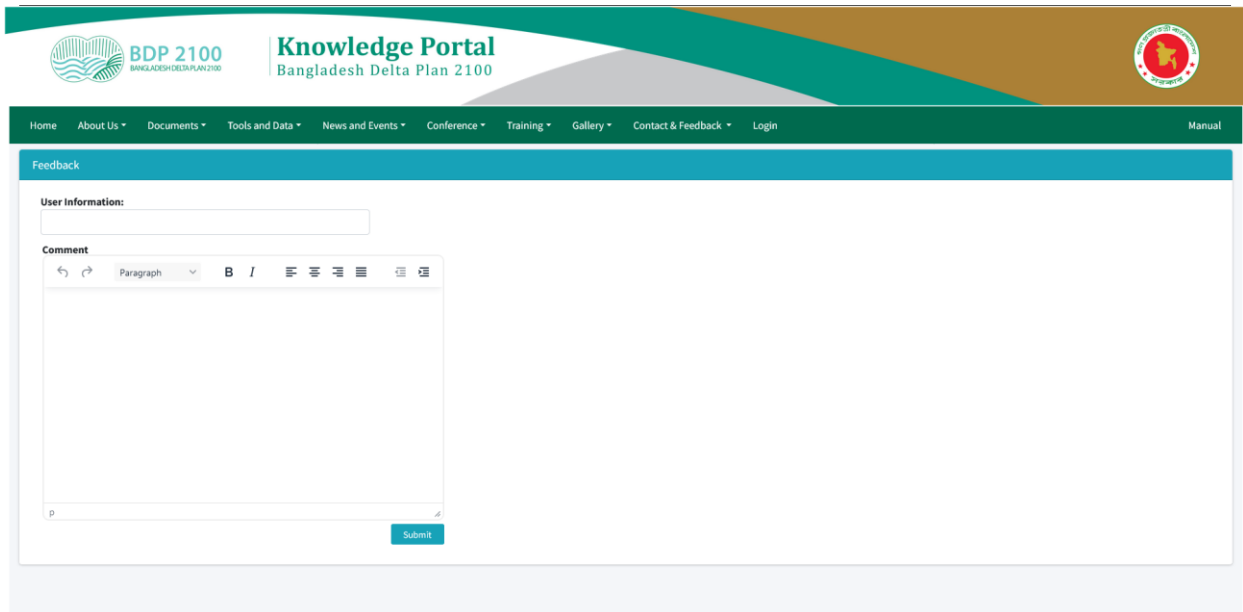


Figure 1.2.9.2 Feedback

### 1.2.10 Login

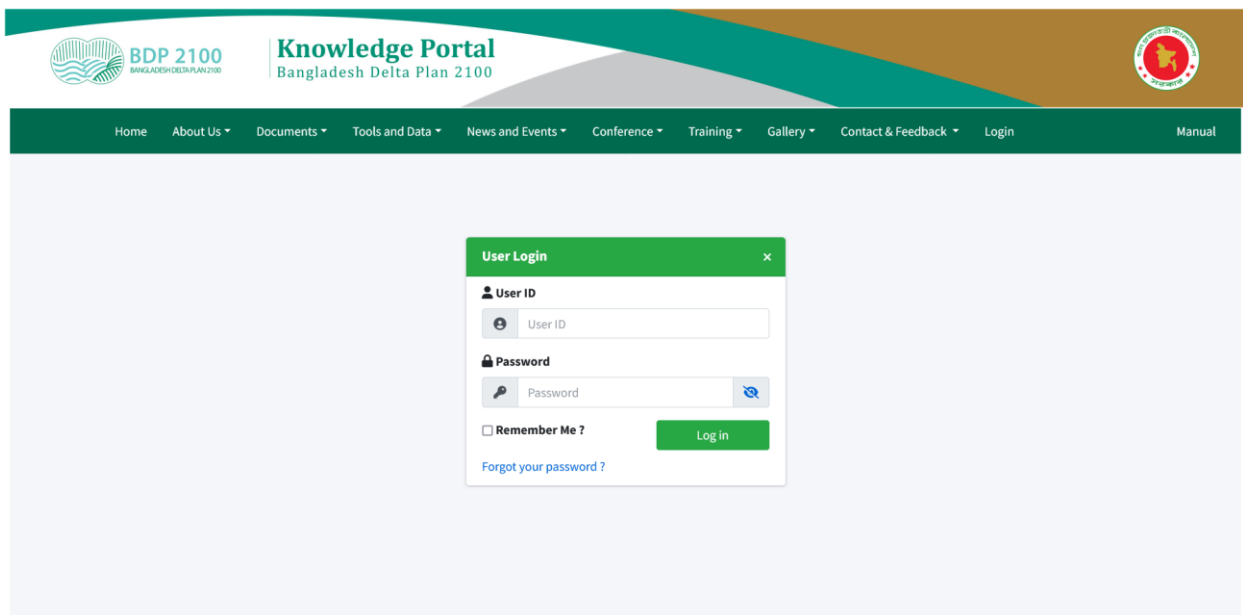


Figure 1.2.10. Login

### 1.2.11 Manual

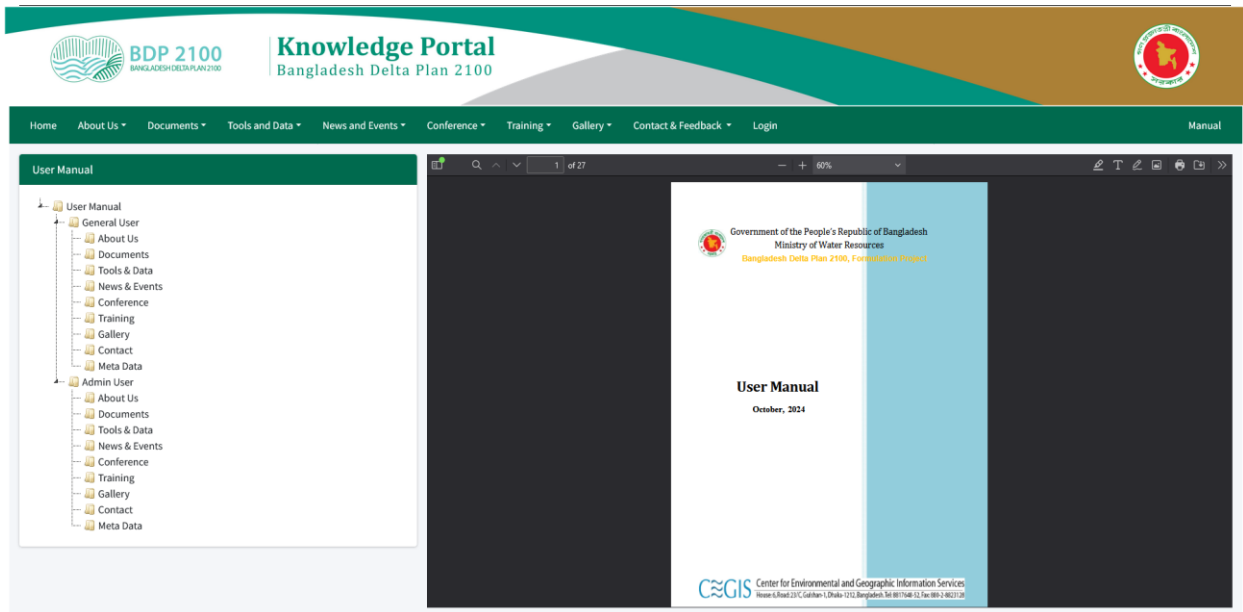


Figure 1.2.11.1 Manual